

# BOONE COUNTY

Named in honor of Daniel Boone (1734-1820), noted hunter and Kentucky pioneer. Organized by legislative enactment March 28, 1871.

**Akron.** Peak population (1900), 27. Post office established February 2, 1881; discontinued November 21, 1905. Present railroad siding and former hamlet named by U.S. Post Office Department, probably for Akron, Ohio.

**Albion.** Peak population (1940), 2,268. Post office name changed from Hammond July 3, 1883. Named for Albion, Michigan. County seat located here February 25, 1873. Town platted by first postmaster, Loran Clark, on his land and surveyed by George W. Newberry.

**Arden.** Post office established June 15, 1881. Moved to Wheeler County May 15, 1918. Probably named for the English forest of Arden.

**Beaver.** Post office established March 28, 1870. Name changed to Waterville February 2, 1874. Named for its location on Beaver Creek, known for the presence of beaver.

**Boone.** Peak population (1930), 126. Post office established January 28, 1872. Town named for the county by M. E. Stevens.

**Bradish.** Peak population (1910 and 1930), 53. Post office established January 11, 1888; discontinued 1945. Site of this former town chosen by man from Chicago, Illinois. Town platted by Pioneer Town Site Company in 1888. Named in honor of George Bradish, engineer in charge of railroad construction.

**Cedar Rapids.** Peak population (1920), 740. Post office name changed from Dayton July 7, 1882. Named by Adam Smith, who platted town on the Cedar River with the construction of the Burlington Railroad.

**Closter.** Post office established February 21, 1880; discontinued January 31, 1917. Named in honor of Henry Closter, who owned the homestead on which the post office was established.

**Coon Prairie.** Post office established January 31, 1876; discontinued April 6, 1888. Named by Kettler Fumme for Coone Prairie, Wisconsin, where some of the original settlers had resided.

**Dahlburg.** Post office established February 20, 1895; discontinued August 27, 1898.

**Dayton.** Post office established August 17, 1873. Name changed to Cedar Rapids July 7, 1882. Probably named for Dayton, Ohio.

**Denison.** Post office established May 31, 1890; discontinued March 2, 1901. Origin of the name of this former post office has not been learned. Cities in Iowa and Texas and a college in Ohio are called Denison.

**Dublin.** Post office, established February 11, 1874. Name changed to Primrose February 21, 1903. Irish immigrants who settled here named the town for the capital of Ireland.

**Garner.** Post office established February 15, 1881. Name changed to Ira June 25, 1890. Named to honor John S. Garner, first postmaster.

**Hammond.** Post office established December 1, 1871. Name changed to Albion July 3, 1873. Named in honor of John Hammond, early pioneer of Boone County.

**Hardy.** Probably named for a local settler. Formerly situated near Albion.

**Ira.** Post office name changed from Garner June 25, 1880; discontinued July 9, 1892. Origin of the name has not been learned.

**Loran.** Named for Loran Clark, early county settler; changed to Loretto to avoid confusion with another post office with similar name.

**Loretto.** Peak population (1930), 126. Post office established July 21, 1888. See note

**Mauston.** Post office established February 16, 1876; discontinued November 30, 1887. Probably named for Mauston, Wisconsin.

**Mosside.** Post office established June 10, 1880; discontinued November 30, 1887. Origin of the name is unknown.

**Myra.** Former locality probably named for a wife or daughter of a local settler.

**Neoma.** Post office established May 31, 1878; discontinued February 1, 1892. Origin of the name has not been learned. First postmaster was Hiram Snider.

**Oadland.** Former locality probably named for a local settler or for a place in Sweden.

**Olnes.** Post office established March 15, 1881; discontinued October 29, 1902. Probably named for the pioneer family of Lars Olnes.

**Oxford.** Post office established January 8, 1874; discontinued February 15, 1881. Probably named for Oxford University in England or for Oxford, Ohio.

**Petersburg.** Peak population (1940), 657. Post office established September 20, 1887. Platted by the Pioneer Town Site Company and named in honor of John Peters, who owned the land on which the town is located.

**Primrose.** Peak population (1930), 210. Post office name changed from Dublin February 21, 1903. Platted on land belonging to David Primrose and named in his honor.

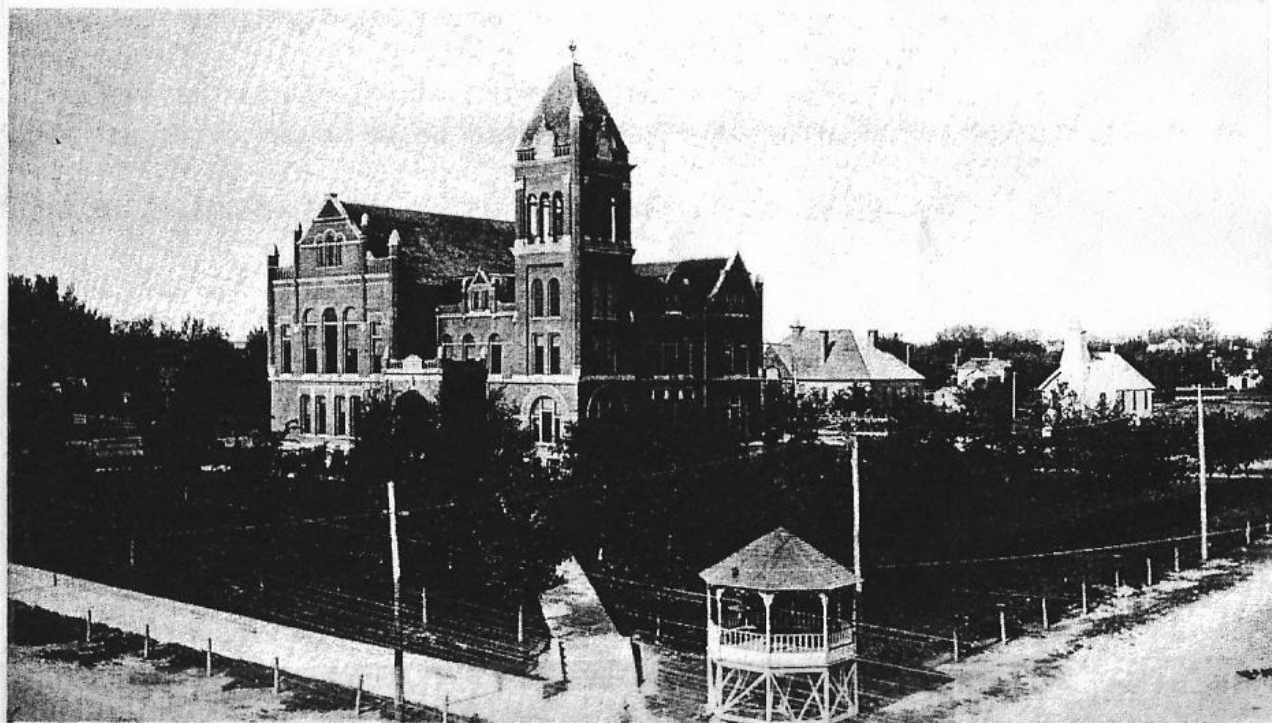
**Raeville.** Peak population (1960), 100. Post office established January 8, 1874. Believed to have been named for two Rae brothers.

**Roselma.** Post office established April 6, 1875; discontinued April 6, 1896. Named for the daughter of Mrs. Marion Davis, first postmistress.

**Saint Edward.** Peak population (1930), 1,029. Post office name changed from Waterville October 5, 1877. Named in honor of Edward Serrels, a Catholic priest who was prominent at Notre Dame University, Indiana. In 1871 A. T. Coquilliard of South Bend, Indiana, acquired the land on which the town now stands. He deeded it to the Saint Edward Land and Emigration Company in 1876 and opened the tracts for sale.

**Sandalia.** Post office established August 21, 1883; discontinued August 2, 1901. Name is probably Swedish in origin.

**Waterville.** Post office name changed from Beaver February 2, 1874. Name changed to Saint Edward October 5, 1877. Probably named for the stream on which it is located.



*Boone County—Courthouse, Albion*